



UMP-CMP Kinase Polyclonal Antibody

Catalog No	YP-Ab-02825
Isotype	IgG
Reactivity	Human;Mouse;Rat
Applications	WB;IHC;IF;ELISA
Gene Name	CMPK1
Protein Name	UMP-CMP kinase
Immunogen	The antiserum was produced against synthesized peptide derived from human KCY. AA range:1-50
Specificity	UMP-CMP Kinase Polyclonal Antibody detects endogenous levels of UMP-CMP Kinase protein.
Formulation	Liquid in PBS containing 50% glycerol, 0.5% BSA and 0.02% sodium azide.
Source	Polyclonal, Rabbit,IgG
Purification	The antibody was affinity-purified from rabbit antiserum by affinity-chromatography using epitope-specific immunogen.
Dilution	Western Blot: 1/500 - 1/2000. Immunohistochemistry: 1/100 - 1/300. Immunofluorescence: 1/200 - 1/1000. ELISA: 1/10000. Not yet tested in other applications.
Concentration	1 mg/ml
Purity	≥90%
Storage Stability	-20°C/1 year
Synonyms	CMPK1; CMK; CMPK; UCK; UMK; UMPK; UMP-CMP kinase; Cytidine monophosphate kinase; Cytidylate kinase; Deoxycytidylate kinase; Uridine monophosphate kinase; Uridine monophosphate/cytidine monophosphate kinase; UMP/CMP kinase; UMP/CMPK
Observed Band	22kD
Cell Pathway	Nucleus . Cytoplasm . Predominantly cytoplasmic, less than 15% nuclear. .
Tissue Specificity	Ubiquitously expressed.
Function	catalytic activity:ATP + (d)CMP = ADP + (d)CDP.,cofactor:Magnesium.,function:Catalyzes specific phosphoryl transfer from ATP to UMP and CMP.,similarity:Belongs to the adenylate kinase family.,subcellular location:Mainly nuclear.,tissue specificity:Ubiquitously expressed.,
Background	This gene encodes one of the enzymes required for cellular nucleic acid biosynthesis. This enzyme catalyzes the transfer of a phosphate group from ATP to CMP, UMP, or dCMP, to form the corresponding diphosphate nucleotide. Alternate splicing results in both coding and non-coding transcript variants.



[provided by RefSeq, Feb 2012],

matters needing attention

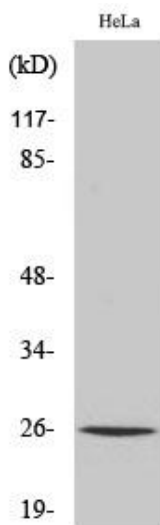
Avoid repeated freezing and thawing!

Usage suggestions

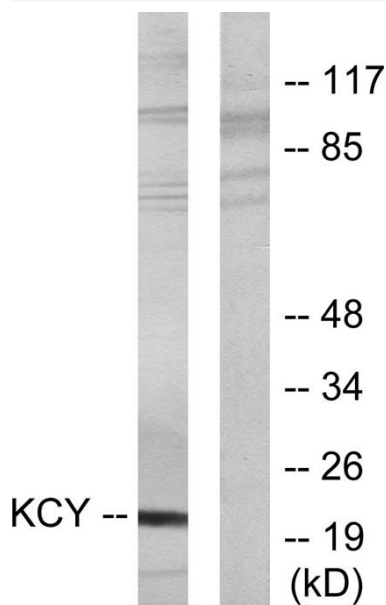
This product can be used in immunological reaction related experiments. For more information, please consult technical personnel.



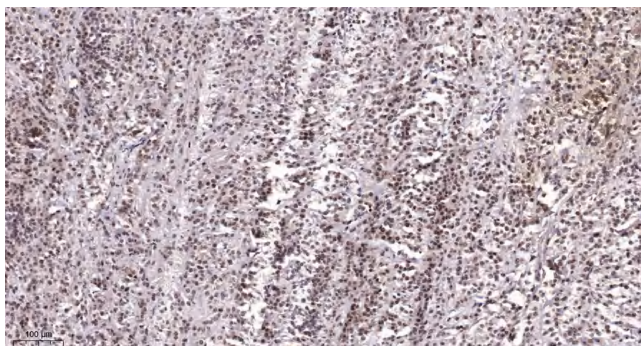
Products Images



Western Blot analysis of various cells using UMP-CMP Kinase Polyclonal Antibody diluted at 1:500. Secondary antibody(catalog#:RS0002) was diluted at 1:20000



Western blot analysis of lysates from HeLa cells, using KYC Antibody. The lane on the right is blocked with the synthesized peptide.



Immunohistochemical analysis of paraffin-embedded human Colon cancer. 1, Antibody was diluted at 1:200(4° overnight). 2, Tris-EDTA,pH9.0 was used for antigen retrieval. 3,Secondary antibody was diluted at 1:200(room temperature, 45min).